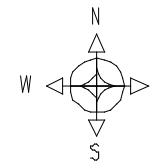


ILHA GRANDE - MOSAICO AMPLA - 2000

EXECUTADO POR MIKAHL LEMOS

SISTEMA GEODÉSICO SAD-69

SUPERVISIONADO POR GILBERTO PESSANHA



w44°19'57"

w44°16'13"

w44°12'29"

w44°08'45"

s23°05'33"

s23°05'33"

s23°07'44"

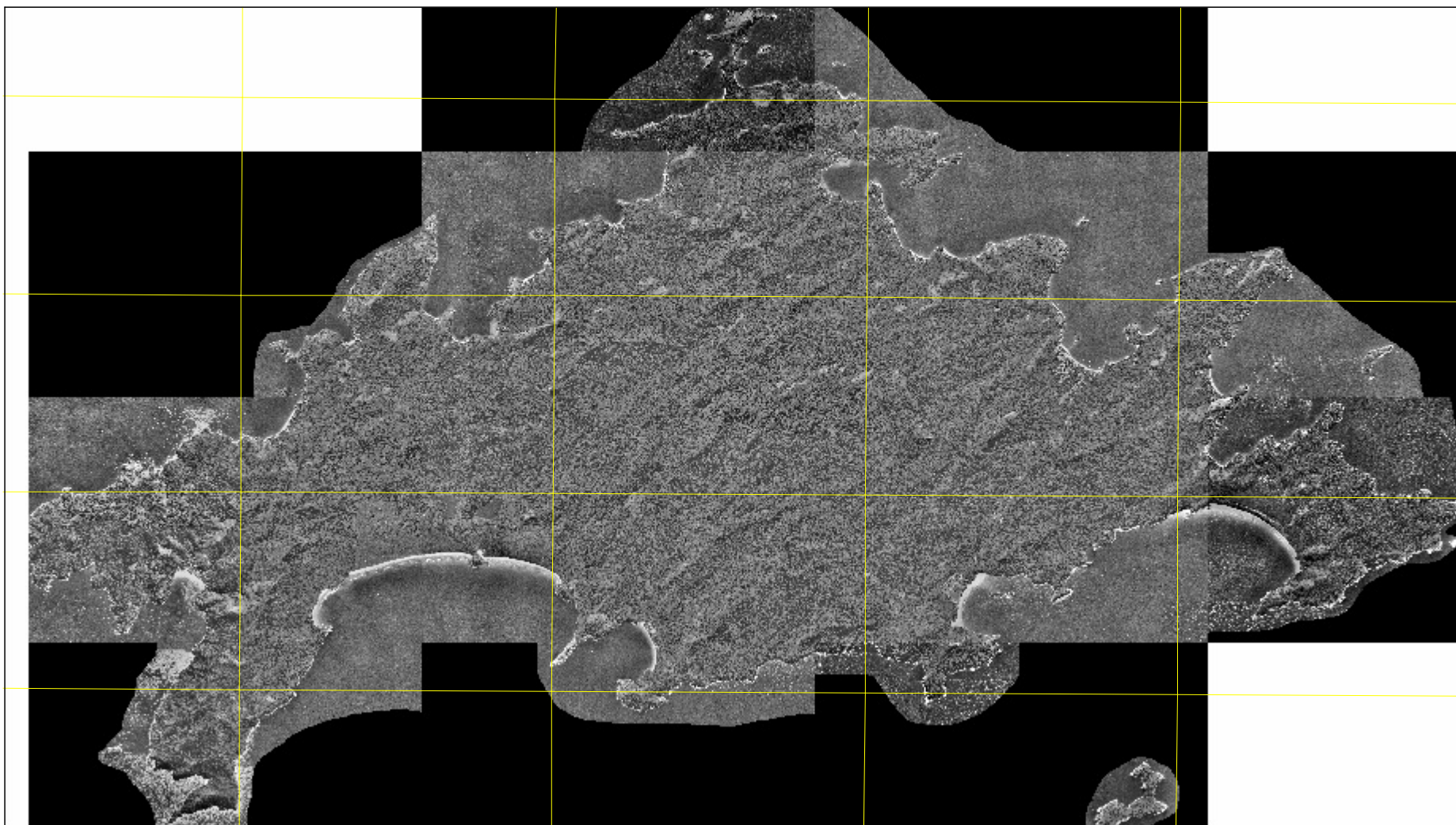
s23°07'44"

s23°09'55"

s23°09'55"

s23°12'06"

s23°12'06"



w44°19'57"

w44°16'13"

w44°12'29"

w44°08'45"

